

Project: CVHS Fiber Backbone Replacement
Title: Addendum No. 2
Date: January 15, 2020
From: Kelley Howell, PIVOT Architecture
To: Interested Bidders

This modifies the Project Manual, Specifications, and Drawings in accordance with the Invitation to Bid and the Instructions to Bidders as follows:

1.1 General Information

1.1.1 Responsibility Matrix - See attached.

1.2 Changes to the Project Manual

- 1.2.1 SECTION 27 1116 – COMMUNICATIONS CABINETS, RACKS, FRAMES AND ENCLOSURES, Acceptable cabinet part numbers provided
- 1.2.2 SECTION 27 1119 – COMMUNICATIONS BLOCKS AND PANELS, Acceptable FDU part numbers provided
- 1.2.3 SECTION 27 1323 – COMMUNICATIONS OPTICAL FIBER BACKBONE CABLING, District allowed manufacturers provided

1.4 Bidder Questions

- 1.4.1 Q. Is all pathway assumed to be new and provided by this contract?
A. Yes. There may be sections of cable tray that will be acceptable for use, but Contractor should assume all pathway is to be provided as part of this effort. Should pathway be identified that is up to current code and specifications, Contractor should identify said section for approval and credit savings back to District.
- 1.4.2 Q. Are contractors to provide new horizontal managers or can existing horizontal managers be used?
A. Existing horizontal managers may be reused.
- 1.4.3 Q. Is there any scope with the 66-blocks in Frame A?
A. No.
- 1.4.4 Q. Will contractor pricing be required to list conduit as a separate line item?
A. Please refer to bid form. There are three line items required: 1) cabling, 2) racking, 3) installation costs. All conduit, j-hooks, etc. should be included in the installation costs.
- 1.4.5 Q. Can bids be submitted via email or do they need to be delivered in a sealed envelope?
A. Page 8 of the RFP indicates that emailed proposals are acceptable.
- 1.4.6 Q. What supplemental information is required to be submitted with the bid other than the completion of the RFQ_COR_FY2021-C2-IC.PDF document provided with the RFP documents?
A. The RFP document does have many places for proposer input. Proposers are also required to provide any information requested in the RFP, as indicated on page 15 Scoring Criteria.

- 1.4.7 Q. What are the costs and procedures associated with background checks?
A. District will reimburse for costs charged for fingerprinting if necessary. Proposers will be responsible for any labor/time to complete the necessary background checking process.
- 1.4.8 Q. No manufacturer's part number was provided for the 12-RU wall mounted cabinet that is Contractor provided Contractor Installed in the B-2 IDF room on drawing T121-A. Please specify requirements for this cabinet.
A. See updated Specification 27 1116.
- 1.4.9 Q. Drawing T120, Sheet Note No. 5 reads, (CABLING CURRENTLY EXPOSED TO OUTDOOR ELEMENTS, SEE ARCHITECTURAL FOR NEW WORK) after review of the Architectural drawings posted for this project, there does not appear to be any reference to the new work required by Division 27, please specify requirements.
A. Architectural work will be completed by the GC already on site. This specific note refers to sealing an exterior area from the elements and will be covered by the GC.
- 1.4.10 Q. Drawing T123, Sheet Note No. 7 reads (CONTRACTOR TO HOLD ALLOWANCE TO REPULL EXISTING CABLE IN THE EVENT THAT SUFFICIENT SLACK IS NOT AVAILABLE TO RE-TERMINATE AT NEW LOCATION) please clarify how bidders are to budget this allowance.
A. Contractors to provide a 'per drop' price for any cable which the District elects to add to this project
Provide per drop pricing as follows:
- Per drop price for additional CMP Category 6 drop to include all cable, terminations and testing to provide a functional link from patch panel to wall jack.
 - Per drop price for additional CMP Category 6A drop to include all cable, terminations and testing to provide a functional link from patch panel to wall jack.
- 1.4.11 Q. Drawing T701, Detail No 3 IDF B1 Bayface (Existing) there is not an FDU enclosure detailed on the bayface detail, will this be a 1-RU or 2-RU FDU and where will it be mounted in the frame?
A. See updated bayfaces on T701 and T702.
- 1.4.12 Q. Drawings T701 & T702, are the FDU panels on the bayface drawings in the MDF, IDF-C, IDF-E and IDF-F existing or new to be provided?
A. New FDUs are to be provided as part of this contract in all frame locations.
- 1.4.13 Q. Is the legacy multimode fiber to remain in place and incorporated into the FDU panels or is it to be removed as part of this scope of work?
A. All legacy multimode fiber is to be removed as part of this project.

Attachments:

Responsibility Matrix
As-builts for Existing Frame D
Section 27 1116 – COMMUNICATIONS CABINETS, RACKS, FRAMES AND ENCLOSURES
Section 27 1119 – COMMUNICATIONS BLOCKS AND PANELS
Section 27 1323 – COMMUNICATIONS OPTICAL FIBER BACKBONE CABLING
T701 BAYFACE DETAILS
T702 BAYFACE DETAILS

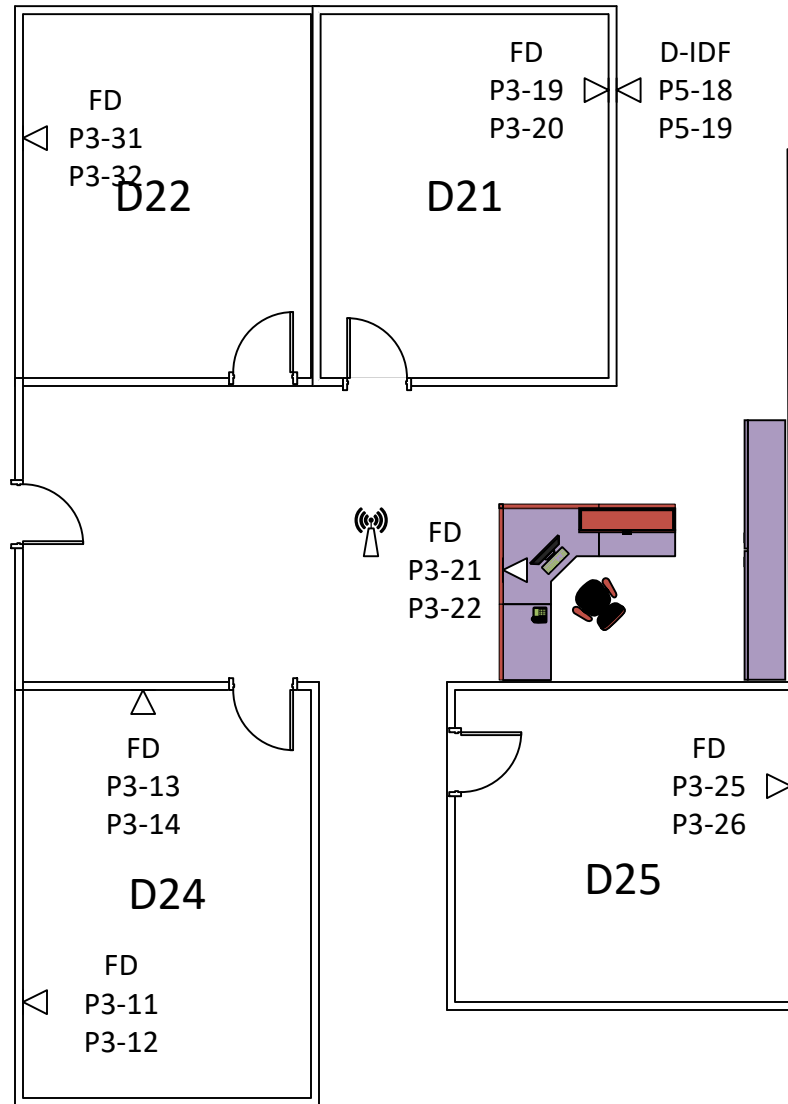
End of Addendum # 2

Responsibility Matrix

	Gerding (GC)	Division 27 Contractor	District
Plywood Backing	X		
Core Drill Approval	X		
Core Drill		X	
Sleeves		X	
Conduit		X	
Electrical Outlet Moves	X		
Provide and Install Telecom Busbar	X		
Bring #6 AWG to Telecom Busbar	X		
Grounding and Bonding in room to Telecom Busbar		X	
Remove and Reinstall Active Electronics			X
Demo Existing Cabinets		X	
Install New Cabinets/Rack		X	
Provide fiber patch cords		X	
Install fiber patch cords			X

CVHS-Counselling area

IDF: MDF (FD) & IDF (D)



Wireless AP

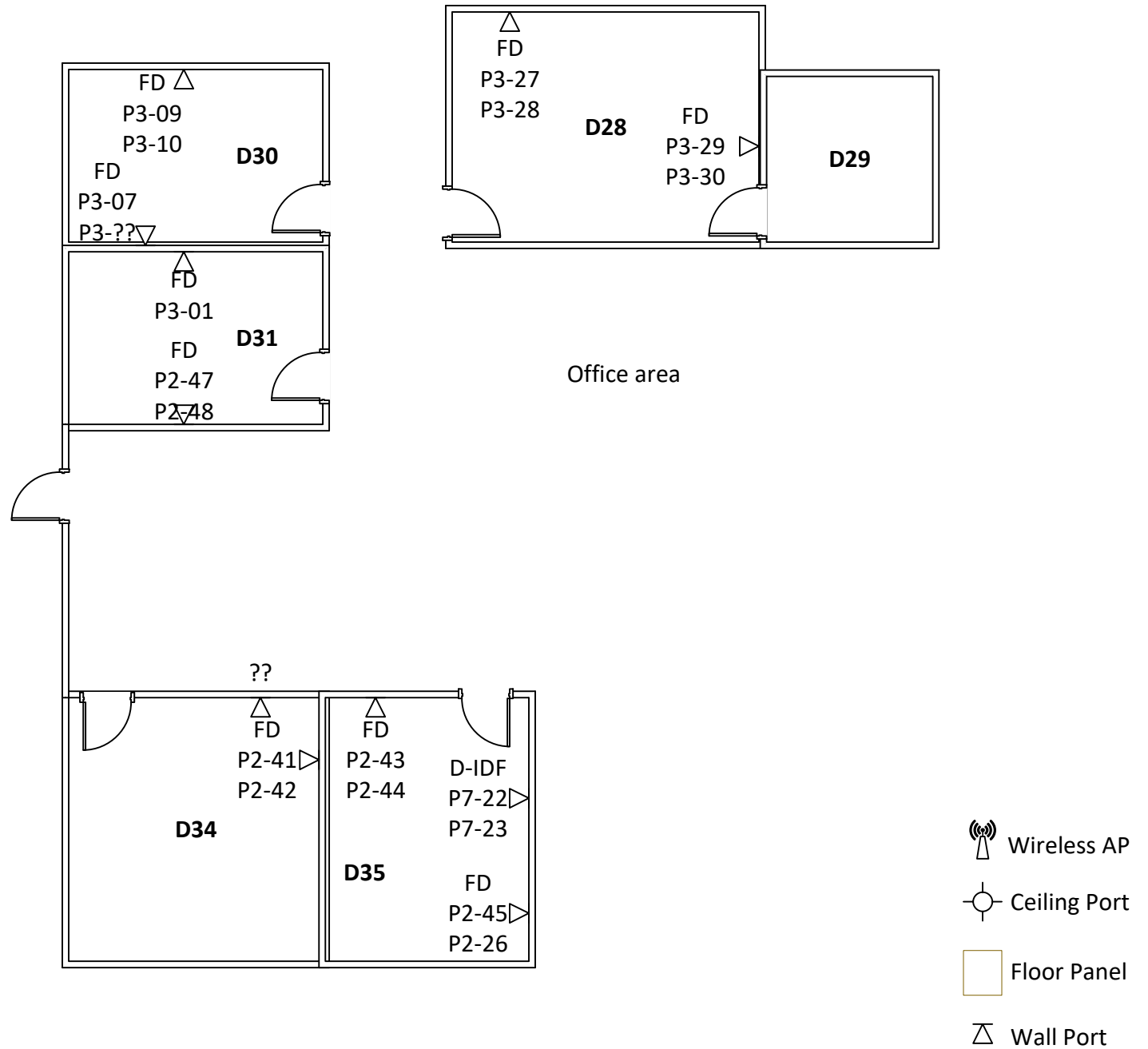
Ceiling Port

Floor Panel

Wall Port

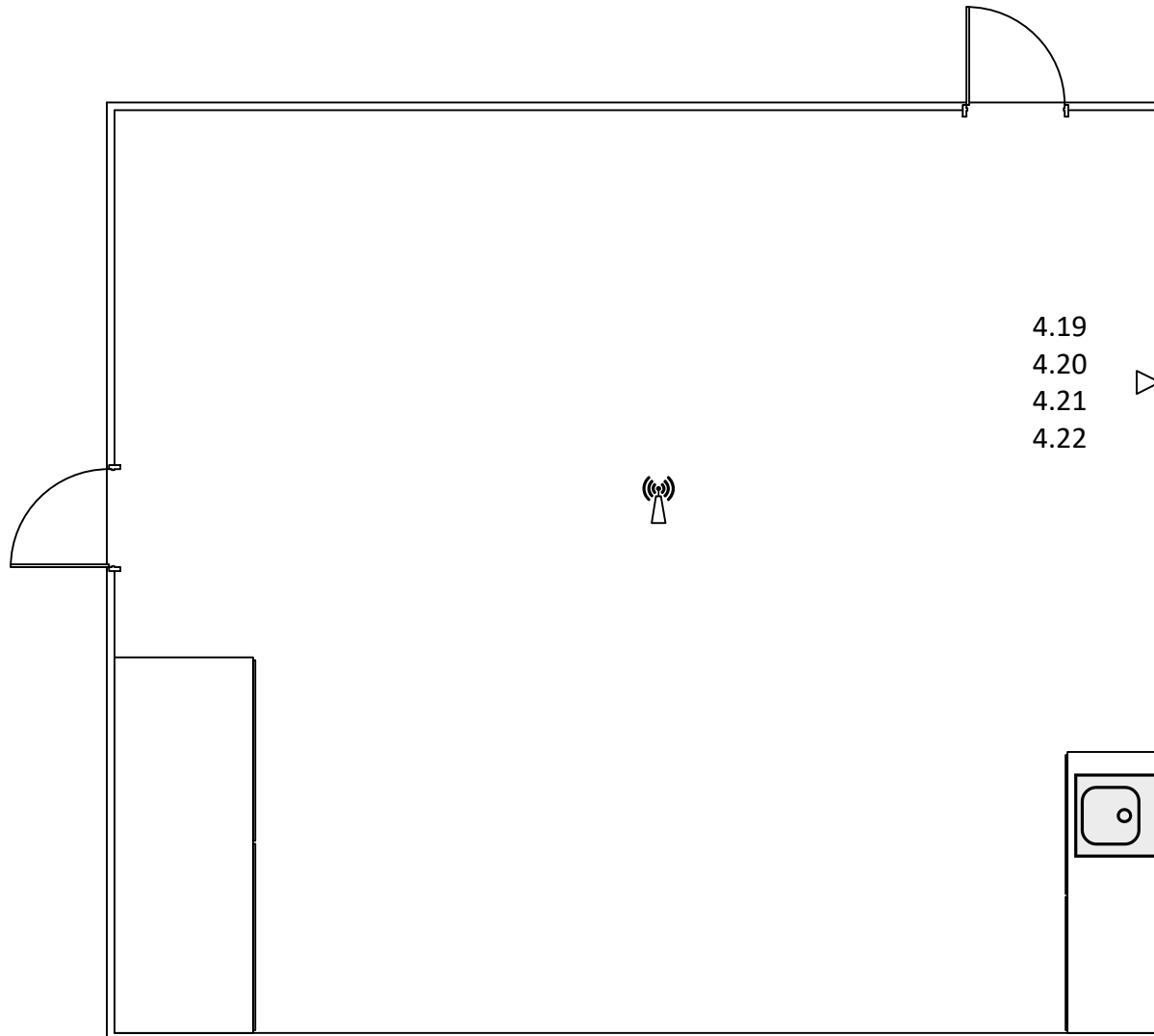
CVHS-Office West

IDF: MDF (FD) & IDF (D)



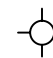
CVHS-D41

IDF: D IDF



4.19
4.20
4.21
4.22

 Wireless AP

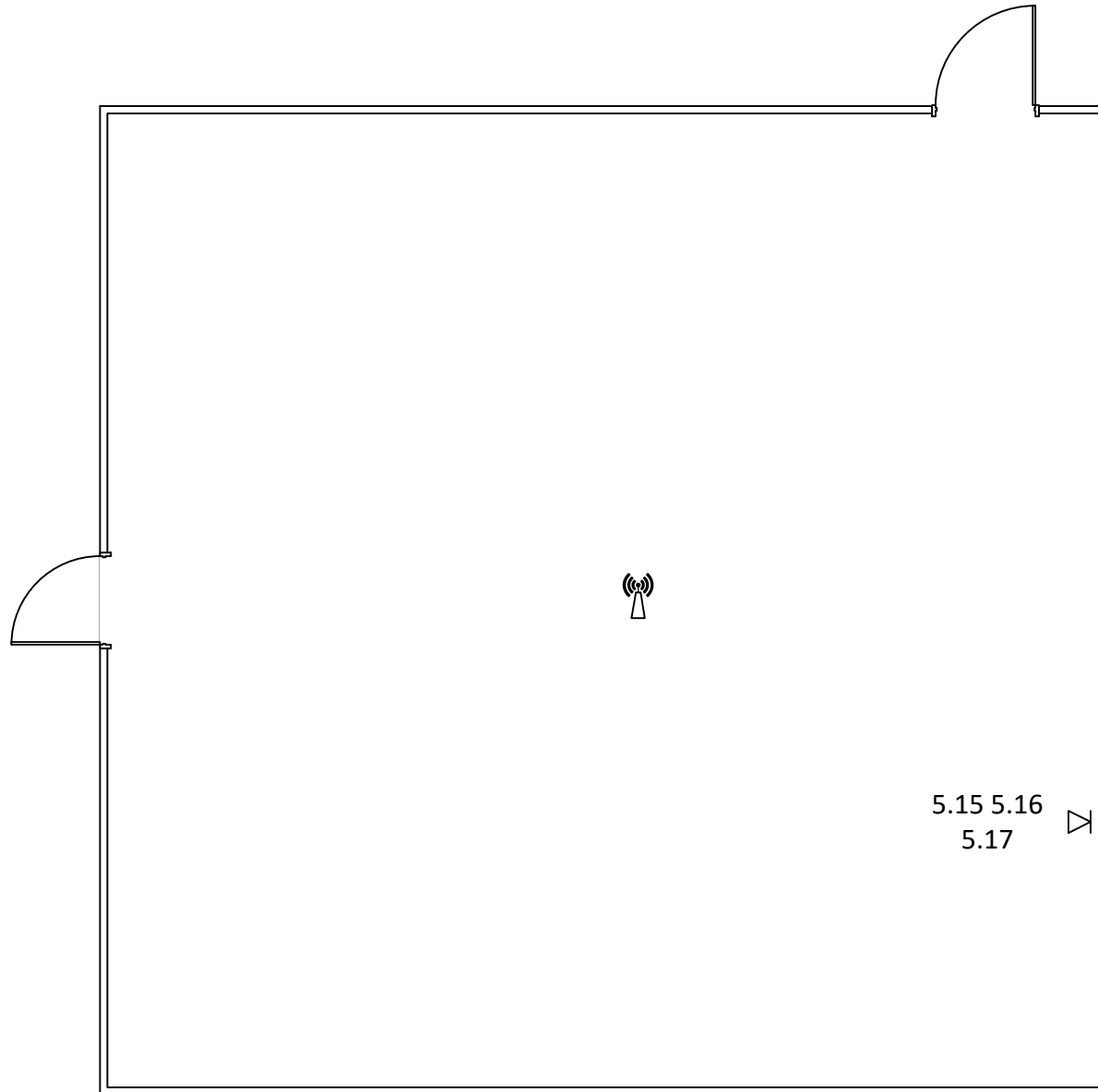
 Ceiling Port

 Floor Panel

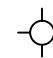
 Wall Port

CVHS-D42


IDF: D IDf



 Wireless AP

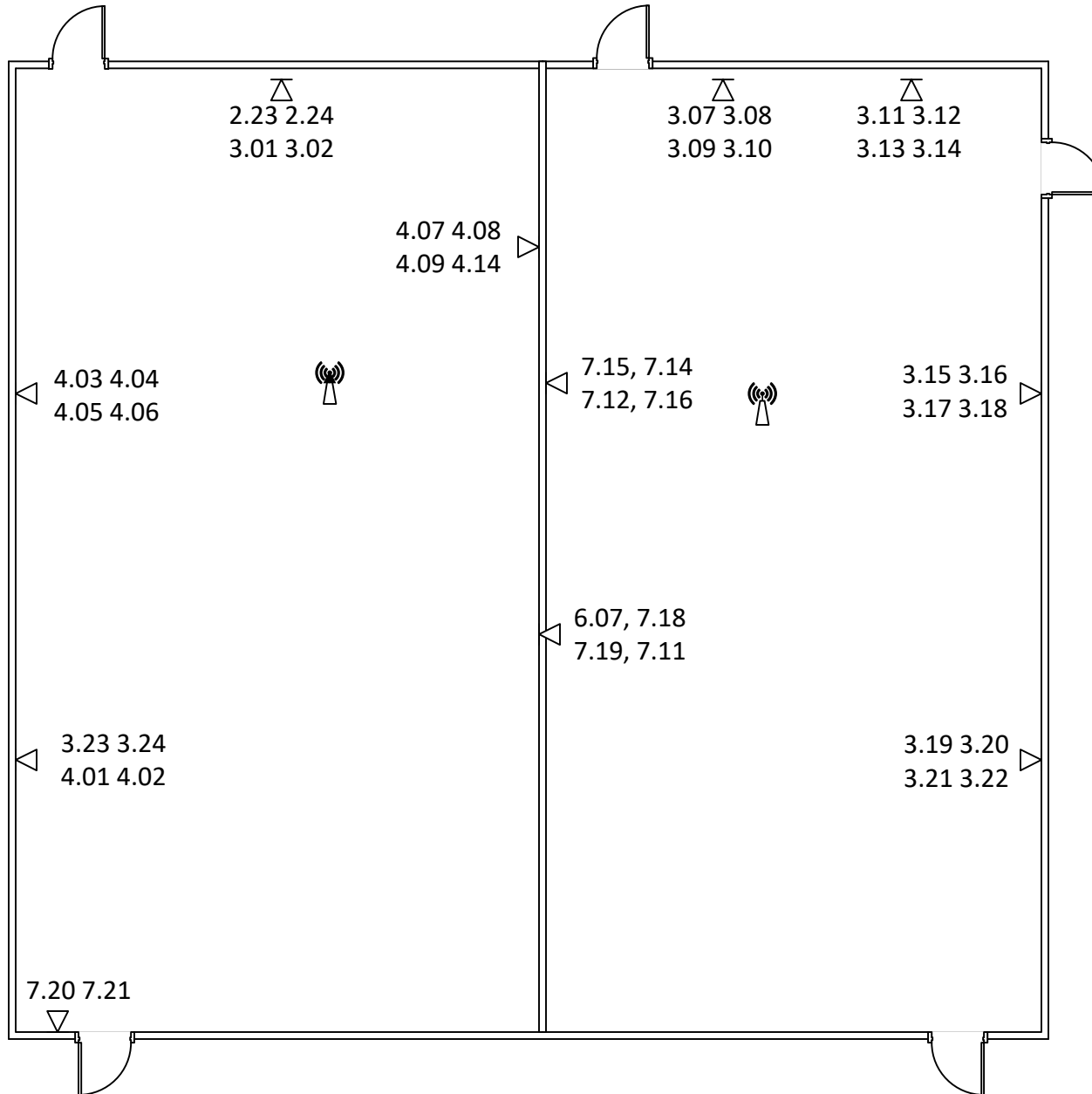
 Ceiling Port

 Floor Panel

 Wall Port

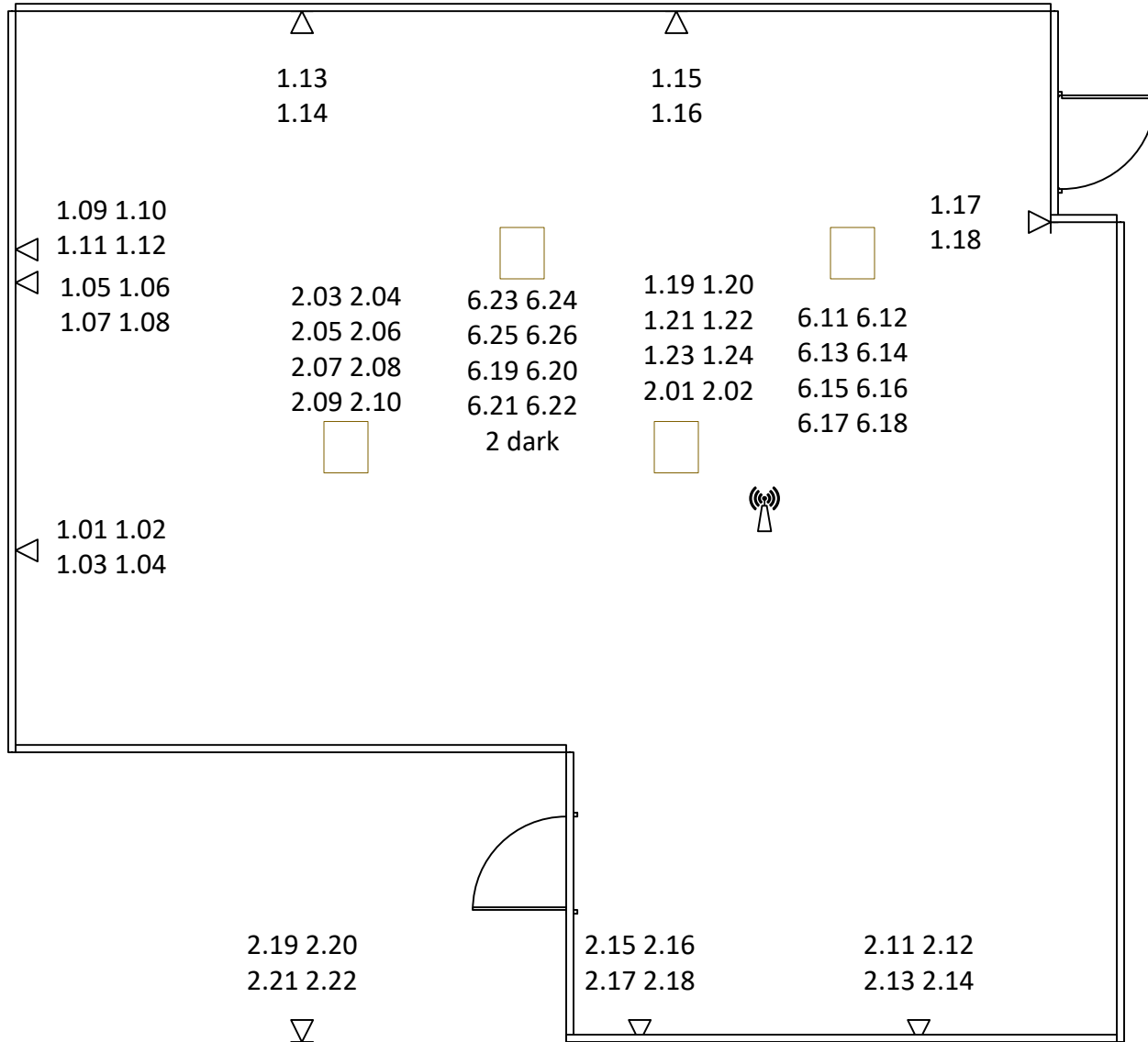
CVHS-D44

IDF: D IDF Rack 1

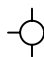


CVHS-D45


IDF: D IDF



 Wireless AP

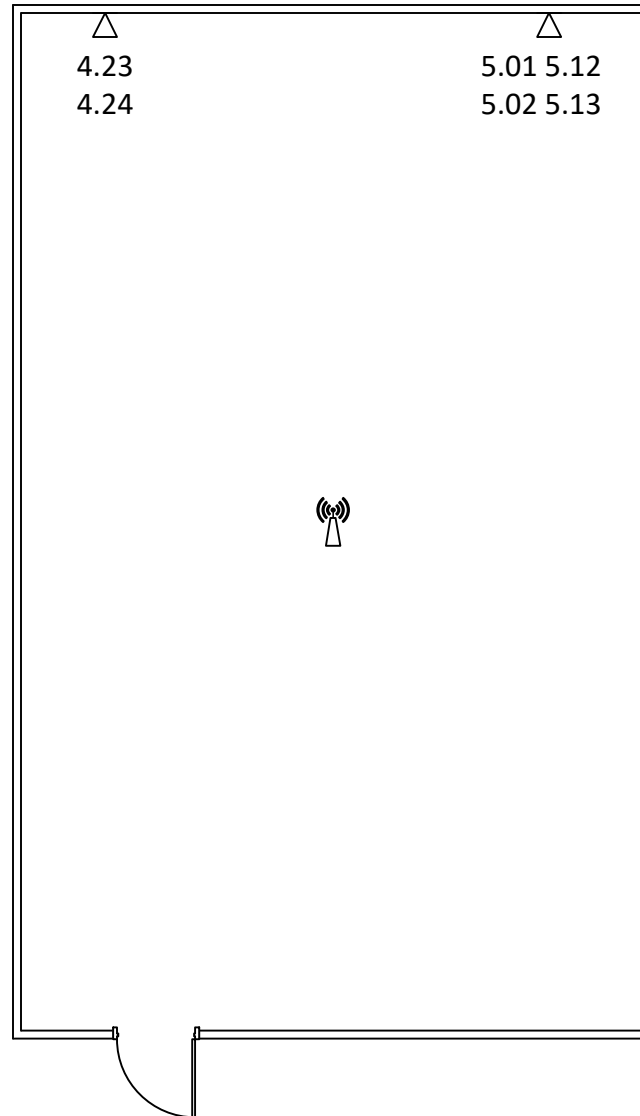
 Ceiling Port

 Floor Panel

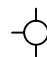
 Wall Port

CVHS-D46

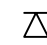
IDF: D IDF



 Wireless AP

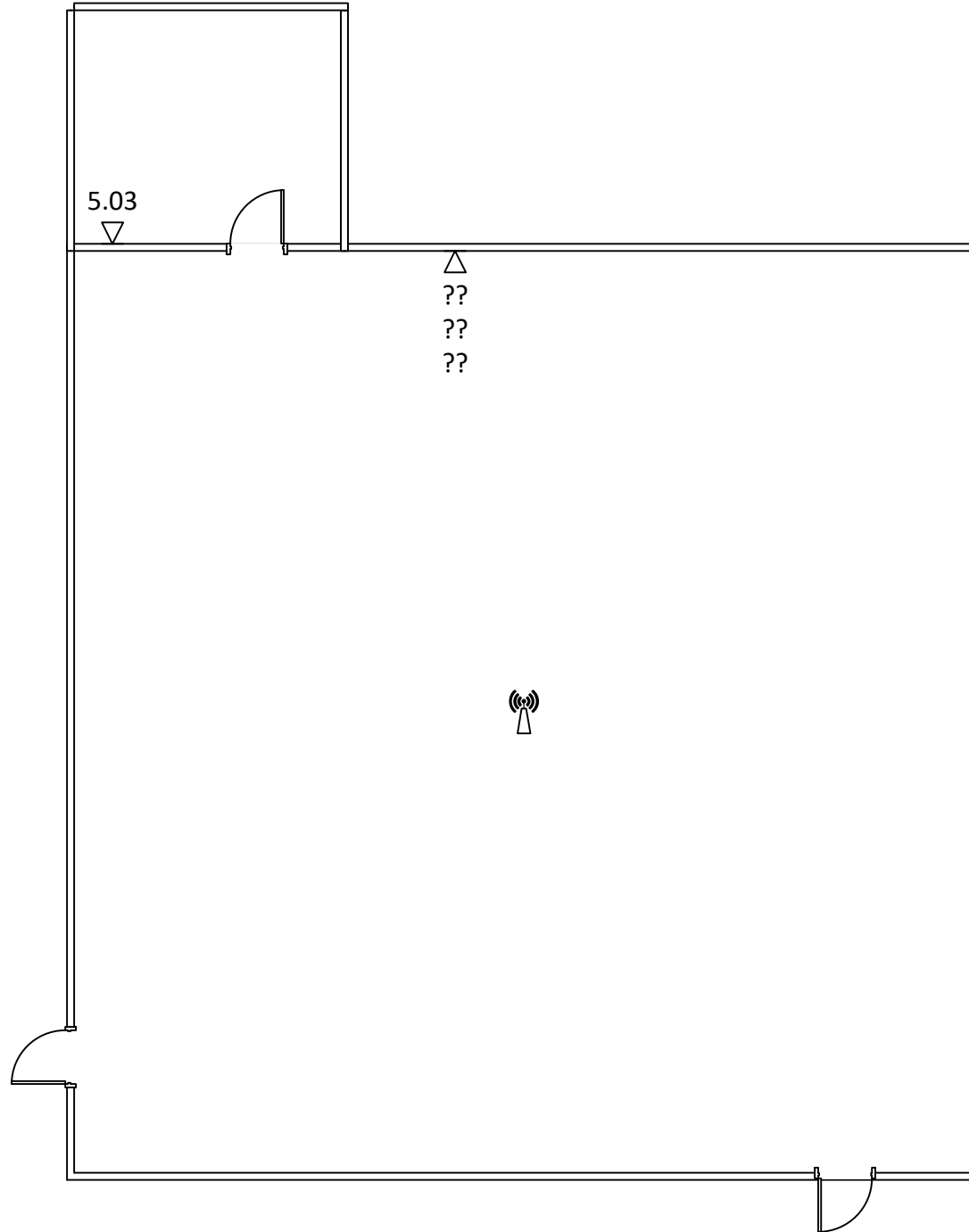
 Ceiling Port

 Floor Panel

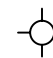
 Wall Port

CVHS-D47


IDF: D IDF



 Wireless AP

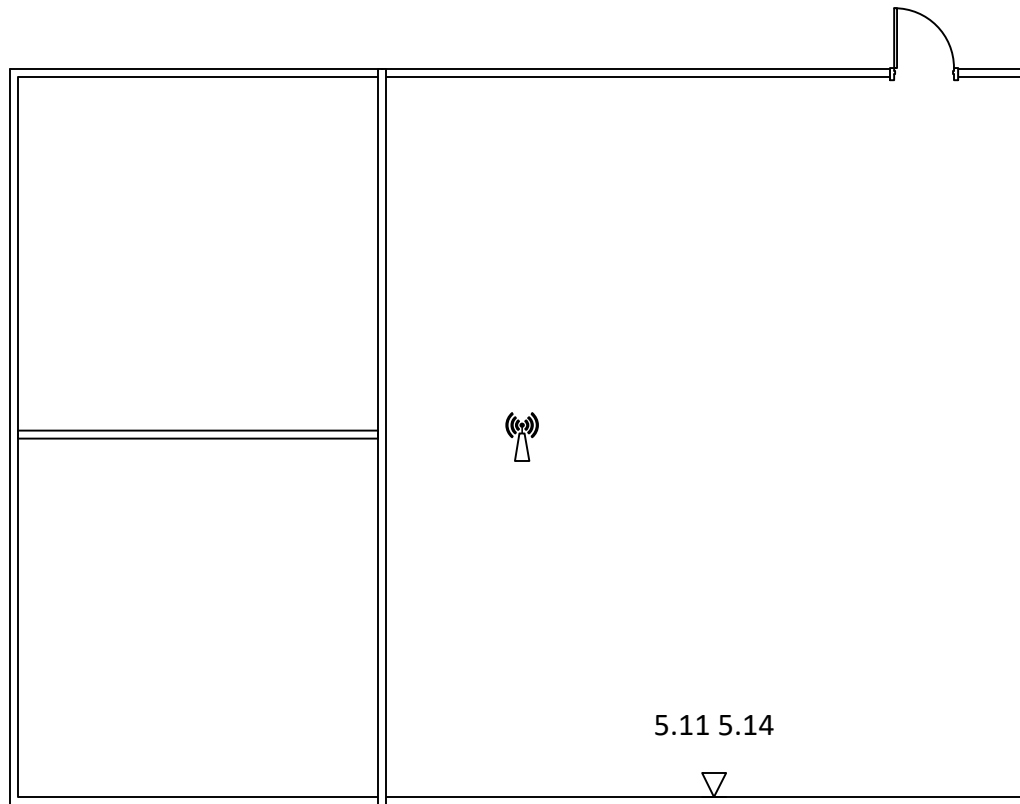
 Ceiling Port

 Floor Panel

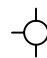
 Wall Port

CVHS-D49

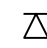
IDF: D IDF



 Wireless AP

 Ceiling Port

 Floor Panel

 Wall Port

SECTION 271116 - COMMUNICATIONS CABINETS, RACKS, FRAMES AND ENCLOSURES

PART 1 - GENERAL

1.1 SUMMARY

- A. Provide all labor, materials, and equipment for the complete installation of work called for in the Contract Documents.
- B. This section includes the minimum requirements for installation of equipment racks in Telecommunications Rooms.

1.2 RELATED SECTIONS

- A. See Section 270000 Part 1.7 for full information.

1.3 QUALITY ASSURANCE

- A. All equipment shall be installed in a neat and workmanlike manner. All methods of construction that are not specifically described or indicated in the contract documents shall be subject to the control and approval of the Owner. Equipment and materials shall be of the quality and manufacture indicated. The equipment specified is based upon the acceptable manufacturers listed. Where “approved equal” is stated, equipment shall be equivalent in every way to that of the equipment specified and subject to approval.
- B. Strictly adhere to all TIA and BICSI[®] recommended installation practices when installing communications/data cabling.
- C. Material and work specified herein shall comply with the applicable requirements of the current adopted revision of the following:
 - 1. ANSI/TIA/568-D Series Commercial Building Telecommunications Cabling Standard,
 - 2. ANSI/TIA/569-D Commercial Building Standard for Telecommunications Pathways and Spaces,
 - 3. ANSI/TIA/607-D Standard for Commercial Building Grounding (Earthing) and Bonding Requirements for Telecommunications
 - 4. NFPA 70 – National Electric Code (*NEC*[®])
 - 5. BICSI[®] – Telecommunications Distribution Methods Manual

1.4 SEISMIC CONSIDERATIONS

- A. All equipment must meet or exceed the requirements of Seismic Zone 3 and satisfy the AHJ for

suitable components.

- B. All design or engineering requirements imposed by the AHJ in relation to the mounting of telecommunications racks, ladder tray, bracing or associated components are the responsibility of this contract. This includes any requirements for stamped drawings of approved configuration.

1.5 SUBMITTALS

- A. Provide Manufacturers cut sheets, specifications and installation instructions for all products (submit with bid).

PART 2 - PRODUCTS

2.1 GENERAL

- A. Unless stated otherwise, Chatsworth (CPI) is the only approved product set for this project.

2.2 TELECOMMUNICATIONS RACK

- A. Freestanding telecommunications racks shall be installed in the Telecommunications Rooms as per the Drawings.
- B. Racks shall be Chatsworth 7' x 19". Part 55053-703.
- C. Chatsworth 3" channel rack-to-runway mounting plate with bracket. Part 12730-712.
- D. Chatsworth cable runway radius drop, Part 12100-712.

2.3 TELECOMMUNICATIONS RACK – FOUR POST

- A. A four-post server rack shall be installed in the Main Telecommunications Equipment Room (MDF).
- B. Racks shall be Chatsworth 7' x 19" x 35" (D), Part 15217-703.
- C. Chatsworth Runway Mounting Bracket, Part 15205-701.
- D. Chatsworth Equipment Support Rails, Part 15235-706.

2.4 TELECOMMUNICATIONS ENCLOSURE

- A. A wall mounted cabinet shall be installed in the IDF B-2.

COMMUNICATIONS CABINETS, RACKS, FRAMES AND ENCLOSURES

271116 - 2

Our specifications and documents in any form, whether printed, electronic, or in any other medium of expression whether now known or later developed, are exclusively the property of NIS, are our Work Product and proprietary to us, and may not be copied, reproduced, incorporated, or otherwise used by anyone. The party that has contracted and paid for our Work Product is granted a limited license to use such Work Product only with respect to the project for which such Work Product was created.

- B. Cabinet shall be Chatsworth 24" x 24" x 30" (D), Part 11996-724

2.5 LABELING

- A. Reference Section 270553.

PART 3 - EXECUTION

3.1 GENERAL REQUIREMENTS -

- A. Do not install any rack components until plywood backboards are installed (by others under the auspices of the General Contractor) and finished with two coats of fire-retardant paint.
- B. The racks shall be ganged as per the Drawings with 6" wide, double-sided, vertical wire management hardware placed between the racks and 6" wide at the ends of the row of racks. See Section 27 11 23 – Communications Cable Management and Ladder Racks for additional detail.
- C. Racks shall be firmly affixed to the floor using expanding anchors and Grade 5 (or greater) bolts.
- D. Top of rack shall be firmly affixed to ladder tray by means of a mounting plate as detailed in Section 27 11 23.
- E. Rack and all metallic components shall be bonded to adjacent assemblies in accordance with ANSI/TIA-607-D.

END OF SECTION 271116

SECTION 271119 - COMMUNICATIONS TERMINATION BLOCKS AND PATCH PANELS

PART 1 - GENERAL

1.1 SUMMARY

- A. General Conditions and other Division 270000 – Communications requirements and sections, apply to the work specified in this section.
- B. Provide all labor, materials, tools, and equipment, including all support structure whether called out for or not, required for the complete installation of work called for in the Contract Documents.
- C. Install modular, rack mounted patch panels, and all support structure in the Equipment and Telecommunication Rooms (MDF/IDF) as outlined on drawings and specifications.

1.2 SECTION INCLUDES

- A. Tie cables between MDF and IDF(s).
- B. Copper station cables which are to be placed between the Work Area Outlets (WAO) and Telecommunications Rooms.

1.3 QUALITY ASSURANCE

- A. All equipment shall be installed in a neat and workmanlike manner.
- B. All materials shall be installed per manufacturer's specifications.

PART 2 - PRODUCTS

2.1 GENERAL

- A. All products must be new and UL[®] Listed for their use.

2.2 PATCH PANELS - COPPER

- A. Existing patch panels to be re-used in new cabinet or rack.

2.3 PATCH PANELS – FIBER

- A. Fiber optic cable shall be terminated utilizing duplex LC connectors in a 1RU enclosure for IDF spaces and a 3U enclosure for the MDF.
- B. Approved products
 - 1. CommScope Part Number 760241725

COMMUNICATIONS TERMINATION BLOCKS AND PATCH PANELS

271119 - 1

Our specifications and documents in any form, whether printed, electronic, or in any other medium of expression whether now known or later developed, are exclusively the property of NIS, are our Work Product and proprietary to us, and may not be copied, reproduced, incorporated, or otherwise used by anyone. The party that has contracted and paid for our Work Product is granted a limited license to use such Work Product only with respect to the project for which such Work Product was created.

2. Approved alternate for Leviton or Panduit product sets

PART 3 - EXECUTION

3.1 GENERAL

- A. All patch panels supporting the copper cabling shall be installed in 7' x 19" equipment racks in the telecommunications rooms.

3.2 INSTALLATION

- A. A two RMU horizontal wire management panel shall be installed at the top of each rack. Additional horizontal wire management shall be installed as per drawings. See Section 27 11 23 for additional detail.

3.3 PATCH PANELS

- A. Patch panels shall be installed in equipment racks as per the details on the drawings. Particular attention is called to the placement of fiber patch panels and horizontal management.
- B. All horizontal cable shall be terminated sequentially on patch panels.

END OF SECTION 271119

SECTION 271323 - COMMUNICATIONS OPTICAL FIBER BACKBONE CABLING

PART 1 - GENERAL

1.1 SUMMARY

- A. This section includes the fiber backbone cable and the termination requirements.
- B. Provide all labor, materials, tools, and equipment required for the complete installation of work called for in the Contract Documents.

1.2 QUALITY ASSURANCE

- A. See Section 270513.
- B. All cable shall be installed in a neat and workmanlike manner.

PART 2 - PRODUCTS

2.1 GENERAL

- A. The use of a manufacturer's name and model or catalog number herein is for the purpose of establishing the product set, which the Contractor is to supply and install.
- B. Quantities are to be determined by Contractor unless specified.
- C. Products shall be UL[®] listed for the purpose they are to be used.

2.2 PRE-APPROVED PRODUCT SETS

- A. The product sets listed within the Division 27 specifications are a basis of design and should be considered pre-approved. The District will not consider product sets that have not been pre-approved or accepted as per the substitution request process.
- B. Approved Manufacturers:
 - 1. Leviton/Berk-Tek
 - 2. CommScope
 - 3. Panduit/General Cable

2.3 FIBER OPTIC CABLE

- A. Fiber shall be single-mode 9/125µm (OS2). A 12-strand fiber optic cable shall be placed between the Main Equipment Room (MDF) and each of the Telecommunications Rooms (IDFs). Rating shall be suitable for applications with a minimum rating of OFNP. Factory terminated, pre-connectorized assembly is preferred. Jacket shall be yellow in color.
- B. Fiber assembly shall roll within the wall (similar to ANSI/TIA-568-D.3, Type-C.) The final fiber sequence will be as follows:

End	Fiber sequence for fiber (delivered at the LC connector)											
MDF	1	2	3	4	5	6	7	8	9	10	11	12
IDF	2	1	4	3	6	5	8	7	10	9	12	11

2.4 PHYSICAL PROTECTION

- A. Fiber optic cable shall be armored or installed in ¾” innerduct to provide physical protection.

2.5 FIBER OPTIC TERMINATION

- A. Factory assembled and tested cassettes that transition from MPO duplex LC connectors, or are fusion spliced to preconnectorized duplex LC connectors, are preferred.
- B. Rating for connector and cassette assemblies shall be OS2.
- C. Fiber shall present on user side on duplex LC connectors.
- D. Fiber bulkheads shall be blue in color
- E. Blank panels shall be used to cover all unused openings in the patch panel.

PART 3 - EXECUTION

3.1 GENERAL

- A. Cable ties must be finger tight. The cable tie must not distort the outer jacket.
- B. The bend radius shall be no less than 10 times the outside cable jacket.
- C. Only Velcro®-type tie wraps shall be used to bundle cables on the back of the equipment racks and in the cable trays located in the Telecommunication Rooms.
- D. Retain factory test results for fiber assemblies and cassettes for inclusion in as-built documentation to be forwarded to Owner.

3.2 PREPARATION

- A. Conduits - all conduits shall be inspected for bushings prior to cable installation.

3.3 INSTALLATION

- A. Install per manufacturer's instructions.
- B. Install the fiber optic cable by hand or by using a mechanical pulling machine. If a mechanical pulling machine is used, equip the machine with a monitored or recording tension meter. Ensure that at no time the manufacturer's recommended maximum pulling tension is exceeded. Ensure that the central strength member and aramid yarn are attached directly to the pulling eye during cable pulling. Use pulling attachments, such as "basket grip" or "Chinese finger" to ensure that the optical and mechanical characteristics are not degraded during the fiber optic cable installation.
- C. Ensure that excess cable is coiled in a figure eight and fed manually when pulling through pull boxes and splice boxes by hand. Provide tension monitoring at all times during the pulling operation.

3.4 FIBER LABELING

- A. Label fiber patch panels in the MDF as: "Feed to IDF-x", where x = IDF number
- B. Label fiber patch panels in the IDF as "Feed from MDF"

END OF SECTION 271323

45	UNUSABLE	POWER
44	1U WM	2U FDU
43	48PP (PP1)	OPEN
42		POWER
41	2U WM	CIENA 3930
40		
39	48PP (PP2)	OPEN
38		48P-SWITCH
37	2U WM	OPEN
36		
35	48PP (PP3)	2U WM
34		
33	2U WM	OPEN
32		48P-SWITCH
31	48PP (PP4)	OPEN
30		2U WM
29	2U WM	48P-SWITCH
28		
27	48PP VOICE	OPEN
26		2U WM
25	1U WM	OPEN
24	48PP (PP5)	
23		2U SHELF
22	2U WM	OPEN
21		OPEN
20	48PP (PP6)	OPEN
19		24P-SWITCH
18	24PP (PP7)	OPEN
17	2U WM	2U WM
16		
15	OPEN	OPEN
14	NEW CFCI 2U FDU	48P-SWITCH
13		OPEN
12	OPEN	OPEN
11	OPEN	VGW
10	OPEN	OPEN
9	OPEN	OPEN
8	OPEN	
7	OPEN	ACCEL (UNKNOWN)
6	OPEN	
5	OPEN	
4	OPEN	HIKVISION NVR
3	OPEN	
2	OPEN	2U UPS
1	OPEN	

1 MDF BAYFACE (EXISTING)

18	NEW CFCI 1U FDU
17	48PP (PP1) EXISTING
16	
15	2U WM
14	
13	24P-SWITCH
12	OPEN
11	OPEN RESERVED FOR FUTURE CAT 6A PP
10	
9	2U WM
8	
7	48P-SWITCH
6	OPEN
5	OPEN
4	OPEN
3	OPEN
2	2U UPS
1	

2 IDF A BAYFACE (NEW)

26	UNUSABLE
25	PDU
24	2U WM
23	
22	48PP (PP1)
21	
20	1U WM
19	48PP (PP2)
18	
17	1U WM
16	48PP (PP3)
15	
14	OPEN
13	OPEN
12	NEW CFCI 1U FDU
11	1U WM
10	OPEN
9	48P-SWITCH
8	1U WM
7	24P-SWITCH
6	OPEN
5	OPEN
4	OPEN
3	2U UPS
2	
1	OPEN

3 IDF B1 BAYFACE (EXISTING)

12	NEW CFCI 1U FDU
11	48PP (PP1) EXISTING
10	
9	1U WM
8	24P-SWITCH
7	OPEN RESERVED FOR FUTURE CAT 6A PP
6	
5	2U WM
4	
3	48P-SWITCH
2	2U UPS
1	

4 IDF B2 BAYFACE (NEW)



ISSUED FOR CONSTRUCTION
CSD – CVHS FIBER BACKBONE REPLACEMENT

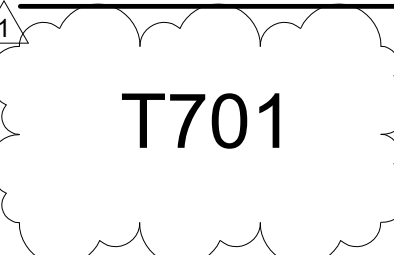
PROJECT # 1832.02
444 NW HIGHLAND DRIVE
CORVALLIS, OR 97330

CORVALLIS SCHOOL DISTRICT

SHEET TITLE:
**BAYFACE
DETAILS**

#	DESCRIP.	DATE
1	Addendum 02	01.14.21

ISSUE DATE: 08.28.2020



45	NEW CFCI 1U FDU
44	OPEN
43	1U WM
42	48PP (PP1)
41	
40	2U WM
39	
38	48PP (PP2)
37	
36	2U WM
35	
34	48PP (PP3)
33	
32	2U WM
31	
30	48PP (PP4)
29	
28	48PP (PP5)
27	
26	2U WM
25	
24	48PP (PP6)
23	
22	48PP (PP7)
21	
20	2U WM
19	
18	OPEN
17	24P-SWITCH
16	OPEN
15	2U WM
14	
13	OPEN
12	48P-SWITCH
11	OPEN
10	2U WM
9	
8	OPEN
7	48P-SWITCH
6	OPEN
5	2U WM
4	
3	POWER
2	
1	2U UPS

1 IDF C BAYFACE (EXISTING)

45	2U WM	2U WM
44		
43	NEW CFCI 1U FDU	OPEN
42	OPEN	OPEN
41	24PP (PP1)	OPEN
40	24PP (PP2)	OPEN
39	24PP (PP3)	OPEN
38	24PP (PP4)	OPEN
37	24PP (PP5)	OPEN
36	OPEN	OPEN
35	48PP (PP6)	OPEN
34		OPEN
33	OPEN RESERVED FOR FUTURE CAT 6A PP	OPEN
32		OPEN
31	OPEN	OPEN
30	OPEN	OPEN
29	OPEN	OPEN
28	OPEN	OPEN
27	OPEN	OPEN
26	OPEN	OPEN
25	2U WM	2U WM
24		
23		OPEN
22		OPEN
21		OPEN
20		OPEN
19		OPEN
18		OPEN
17	RESERVED FOR NETWORK SWITCHES	OPEN
16		OPEN
15		OPEN
14		OPEN
13		OPEN
12		OPEN
11		OPEN
10	2U WM	2U WM
9		
8	OPEN	OPEN
7	OPEN	OPEN
6	OPEN	OPEN
5	OPEN	OPEN
4	OPEN	OPEN
3	OPEN	OPEN
2		
1	2U UPS	2U UPS

2 IDF D BAYFACE (NEW)

45	OPEN
44	NEW CFCI 1U FDU
43	OPEN
42	OPEN
41	OPEN
40	OPEN
39	
38	2U WM
37	
36	48PP (PP1)
35	
34	2U WM
33	
32	48PP (PP2)
31	
30	2U WM
29	
28	48PP (PP3)
27	
26	2U WM
25	
24	48PP (PP4)
23	
22	2U WM
21	
20	48PP (PP5)
19	
18	2U WM
17	48P-SWITCH
16	
15	2U WM
14	
13	48P-SWITCH
12	OPEN
11	OPEN
10	2U WM
9	
8	24P-SWITCH
7	OPEN
6	
5	2U WM
4	POWER
3	OPEN
2	
1	2U UPS

3 IDF E BAYFACE (EXISTING)

45	OPEN	OPEN
44		NEW CFCI 1U FDU
43	3U 48PP VOICE	OPEN
42		POWER
41		
40	2U WM	2U WM
39		OPEN
38	48PP (PP1)	48P-SWITCH
37		OPEN
36	2U WM	2U WM
35		
34	48PP (PP2)	OPEN
33		48P-SWITCH
32	2U WM	OPEN
31		
30	48PP (PP3)	2U WM
29		OPEN
28	2U WM	48P-SWITCH
27		OPEN
26	48PP (PP4)	2U WM
25		
24	2U WM	OPEN
23		48P-SWITCH
22	48PP (PP5)	OPEN
21		
20	2U WM	2U WM
19		OPEN
18	48PP (PP6)	48P-SWITCH
17		OPEN
16	2U WM	POWER
15		24-SWITCH
14	48PP (PP7)	OPEN
13		
12	2U WM	2U WM
11		
10	48PP (PP8)	2U UPS
9		
8	2U WM	2U UPS
7		
6	48PP (PP9)	
5		
4	2U WM	OPEN SPACE WITH SHELF HOLDING POWER CONDITIONER UPS
3		
2	OPEN	
1	OPEN	

4 IDF F BAYFACE (EXISTING)



ISSUED FOR CONSTRUCTION
 CSD – CVHS FIBER BACKBONE REPLACEMENT
 PROJECT # 1832.02
 444 NW HIGHLAND DRIVE
 CORVALLIS, OR 97330

SHEET TITLE:
BAYFACE DETAILS

REVISIONS:
 # DESCRP. DATE
 1 Addendum 02 01.14.21

ISSUE DATE: 08.28.2020

