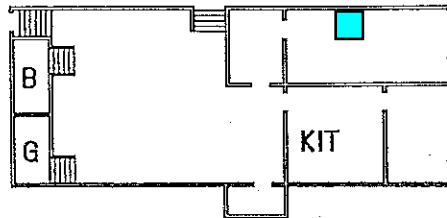


FIRST FLOOR

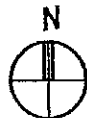


BASEMENT

● New IC Simplex (2)

■ MDF 01

Pratum - FY24 E-rate wired upgrade proposal - v1
 Updated: 2024-01-29
 All locations are approximate and subject to later refinement



LUEY ARCHITECTS
 ARCHITECTURE AND PLANNING



301 TIBARD PLAZA • 11845 S.W. PACIFIC HWY • TIBARD OR 97223 • (503) 864-3822

PRATUM ELEMENTARY SCHOOL
 PRATUM SCHOOL DISTRICT 45

8995 SUNNEYVIEW RD NE SALEM, OR 97305-9556

DATE: DEC. 92

DRAWN: TN

PROJECT NO: 8203

DRAWING TITLE:
 OVERALL PLAN

SHEET NO. 1

