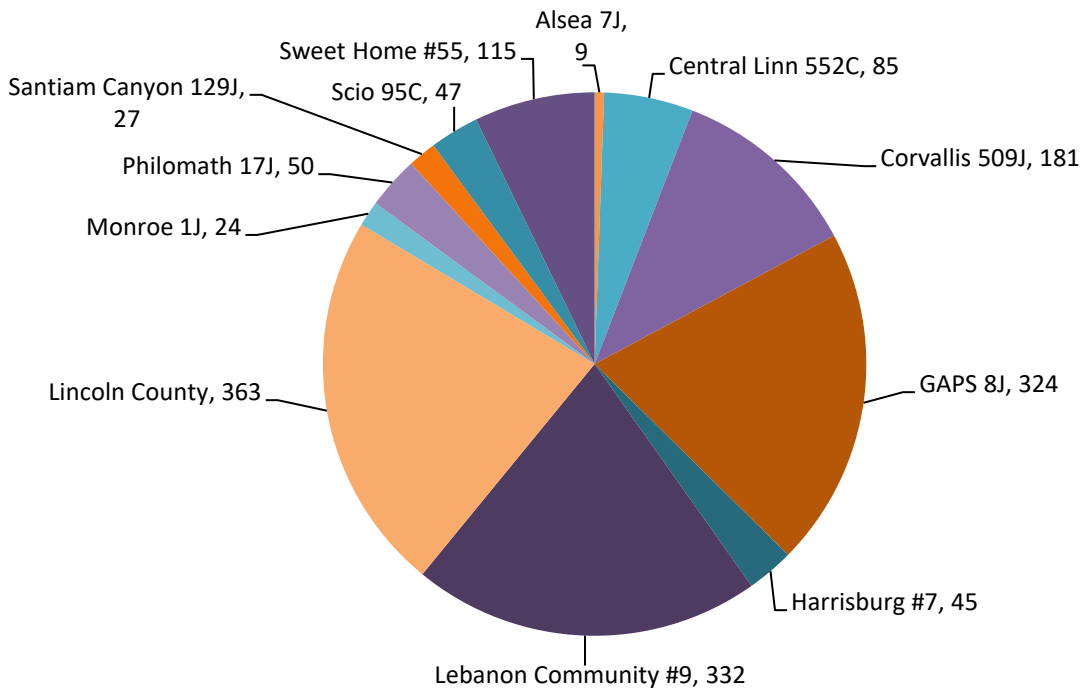


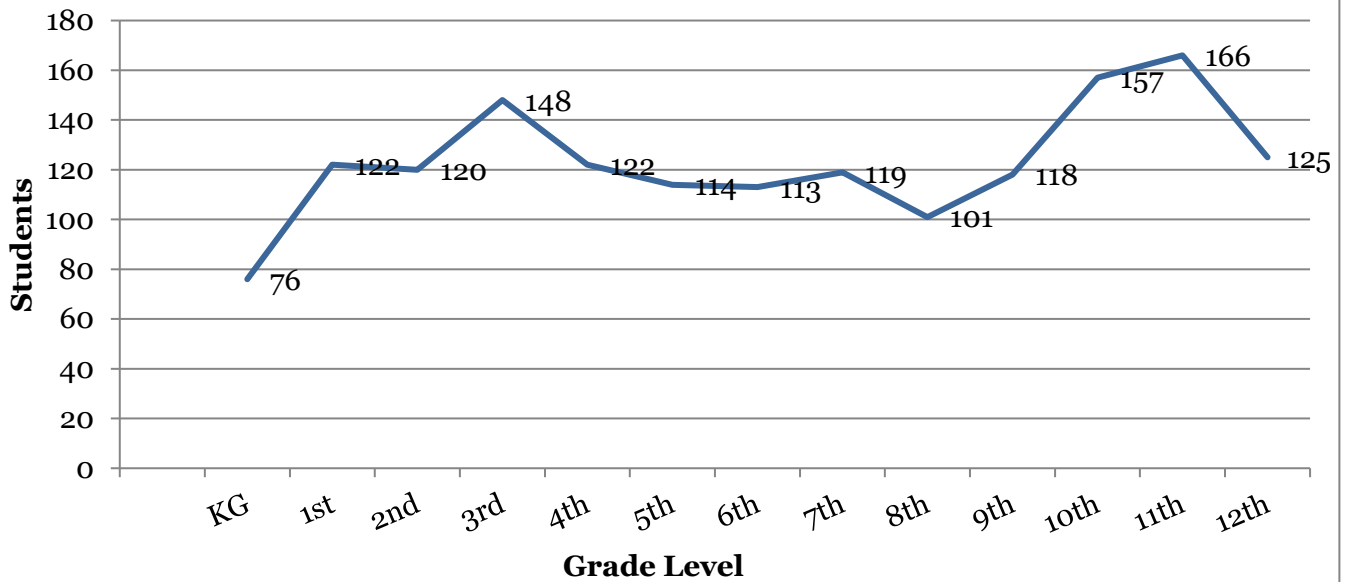
# LBL ESD Home School Data Summary

As of June 19, 2019, there are **1602 home school students** currently enrolled with LBL in Linn, Benton and Lincoln Counties.

## Current Home School Enrollment by District



## Current Home School Enrollment by Grade Level



Note: Oregon law now requires parents to notify the ESD of their intent to home school when the child is 6 years old. Many students do not enroll until 1<sup>st</sup>.

## Summary of Basic Responsibilities

### Parent Responsibilities

- Notify ESD of intent to home school when the child reaches 6 years of age, or within 10 days of removing student from public/private school. *ORS 339.010 has been amended to lower the age of compulsory attendance from 7 to 6.*
- Submit test scores to ESD upon request
- Full responsibility and freedom to design student's education – including the choice and purchase of all educational materials

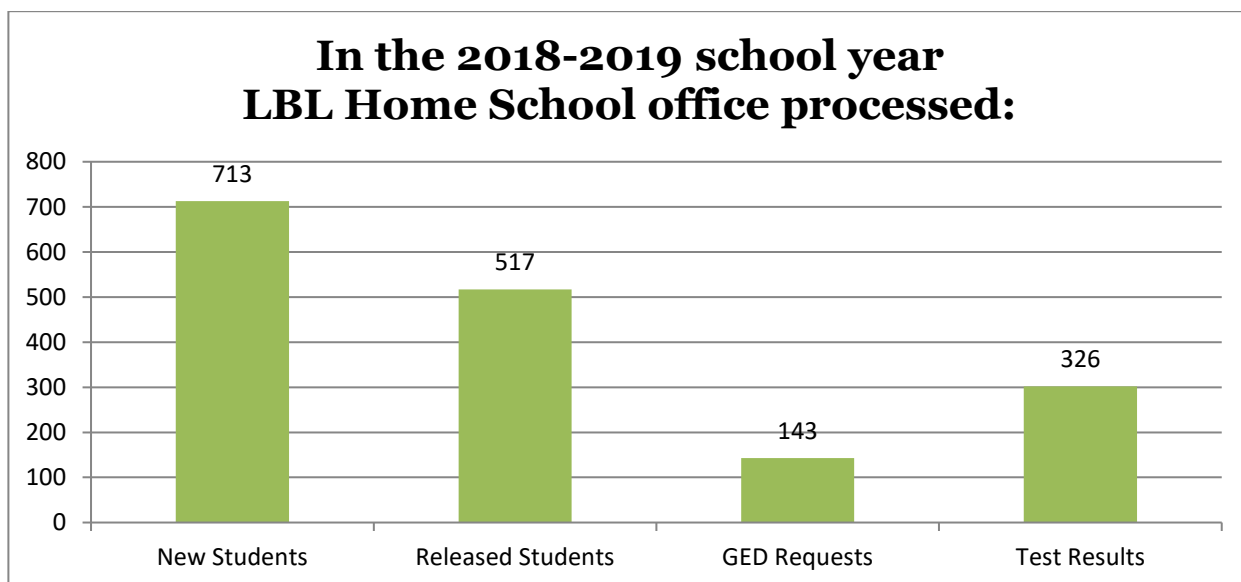
Parents are notified of their legal obligations through our website, regular communication from our office and the notification packet they receive before registering for home school.

### School District Responsibilities

- Child Find for Special Education
- Offer Special Education to Eligible Students
- Receive & Process Test Scores for Students In Interscholastic Activities
- Process Requests to Attend District Courses

On the notification form, parents have the option to report if the student has an identified learning disability or has a current IEP or PDP. We collect this data in order to assist the local schools/districts with their Child Find responsibilities. **Of the 1602 currently enrolled students, 193 have a parent reported disability.** LBL does not track the number of students who are receiving Special Education services from their local district.

### ESD Responsibilities



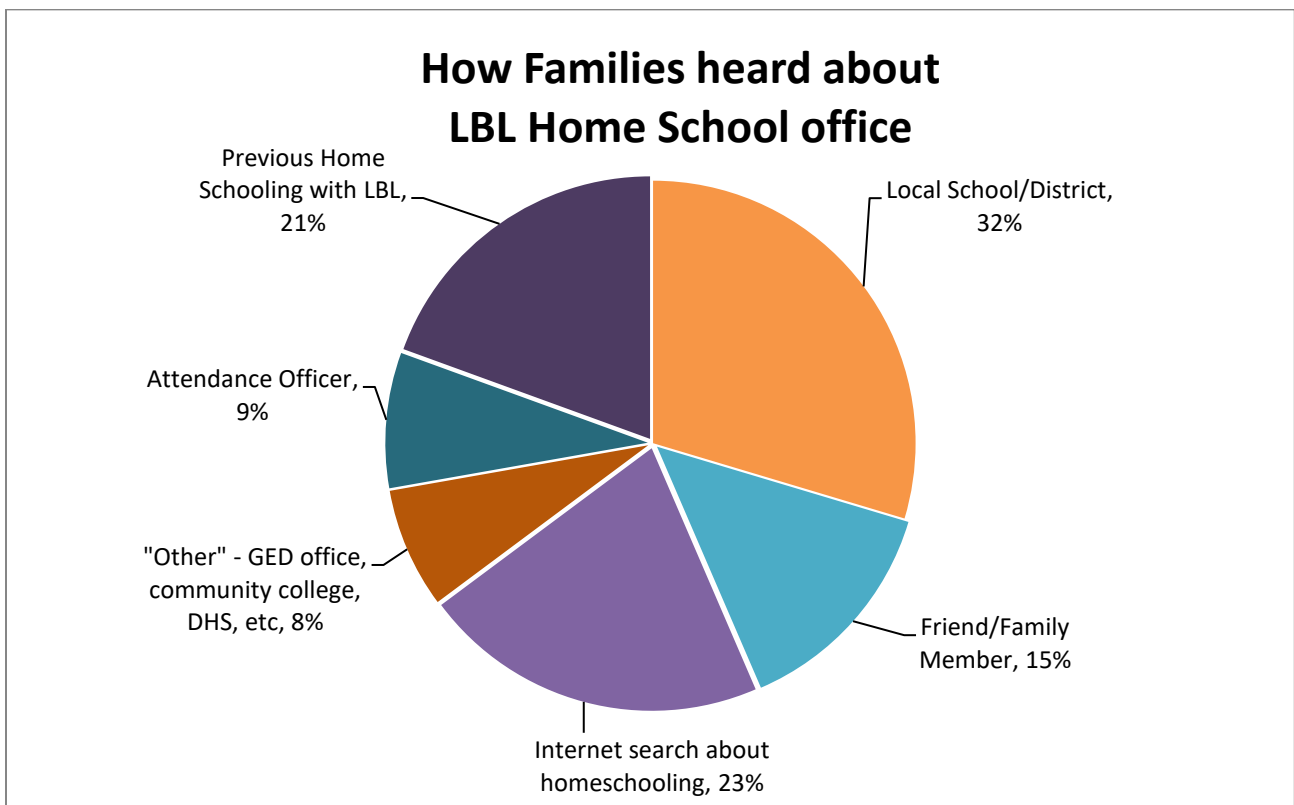
LBL has the responsibility to:

- Receive, Process & Record Notifications
- Inform Parents of Testing Requirements
- Request Test Results
- Receive, Review & Record Testing Information
- Communicate with School Districts
- Communicate with Community Colleges
- Respond to Parent Inquiries

During the school year, we send weekly reports to LBL attendance officers regarding newly enrolled or released students. We also send out a monthly report to each school regarding home school students in their area. Our office is in regular communication with schools regarding individual student issues.

LBL must sign authorization forms for Home School students before they can get a GED, or enroll as an underage student at a community college.

Students hear about home school in many ways. A voluntary survey of new home school families, with 111 responses, found:



*\*Note: Some families chose more than one category.*

## Home School Testing Requirements

- **Testing for grade levels 3, 5, 8, and 10 shall occur in the third, fifth, eighth, and tenth year ending August 15<sup>th</sup>**
  
- **Tests approved for assessment of home school students were:**
  - TerraNova 2nd Edition/CAT 6
  - TerraNova 3rd Edition
  - Stanford Achievement Test 10th Edition
  - The Iowa Test of Basic Skills (ITBS), Iowa Test of Educational Development (ITED)
  - The Iowa Assessments.
  
- **Tests must be administered by someone who is qualified and neutral**
  - Neutral - no relationship to child by bloodline or marriage;
  - Qualified – Has personnel or teaching license from Oregon TSPC; or Oregon Board of Psych Examiners license; or met publishers qualifications for purchase and has purchased a test; or completed an appropriate test administration course; or previously qualified and tested last year

### **Test result must be at the 15th percentile or above**

- **If test result is below 15th percentile, must be tested again the next year**

### **If 2nd test shows decline, must be tested again within one year AND the ESD Superintendent may:**

- allow parent to continue home schooling
- place the education of the child under the supervision of a licensed teacher (selected by the parent and at parent expense)

- **If 3rd test shows continued decline, the ESD Superintendent may:**

- allow parent to continue home schooling, and retest the student in a year, or
- place the education of the child under the supervision of a licensed teacher (selected by the parent and at parent expense), and retest the student in a year, or
- Order the child back to public school for up to 12 months

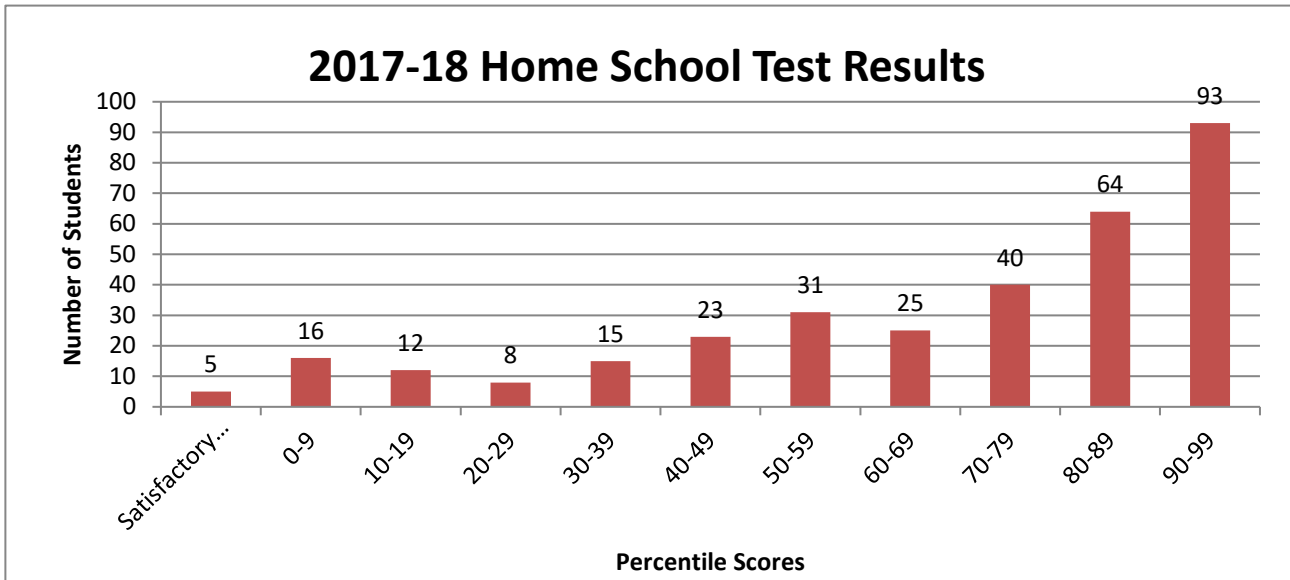
### **Decline MEANS decline**

If test scores are below the 15<sup>th</sup> percentile but hold steady or show improvement, testing schedule goes back to 3, 5, 8 and 10.

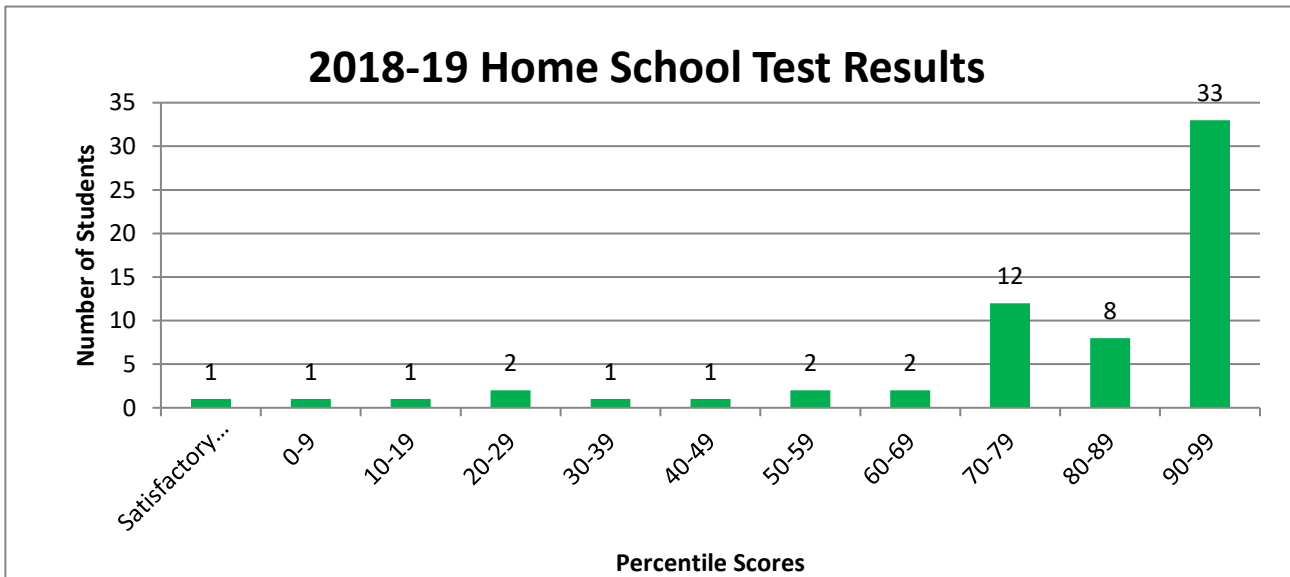
## Home School Testing Exceptions

- Interscholastic activity participation requires test scores to be in the 23rd percentile or above AND annual testing (reported to district, not ESD)

- No testing is required within 18 months of withdrawing from public or private school
- Students with disabilities can show academic progress in alternative ways



*Note: Test results are due to LBL on September 30<sup>th</sup>. If required test results are not submitted, a student is released from home school due to noncompliance with Oregon law.*



*Note: Test results are due to LBL on September 30<sup>th</sup> so many families have not yet submitted results for the 18/19 year.*